



ITEM NO. _____

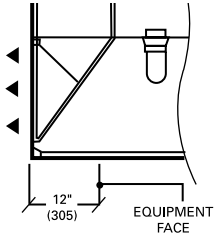
Ventilator Air Supply Options

Carroll Manufacturing International

Models SP, SP-2, SR, SV, SI, CPB, SW

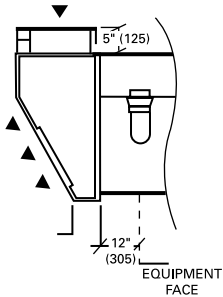
25 Johnson Street, Thornhill, Ontario, Canada L3T 2N8
Phone: 905-731-1050 Fax 905-731-8547
Website: www.carrollmi.com
Email: info@carrollmi.com

perforated



“SP” Style - Perforated Front Panel Discharge

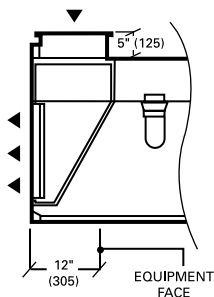
Standard - Horizontal front facing panel openings can typically supply 80% or more of required make-up air. Recommended supply air temperature range is 60° to 65°F, but dependent upon volume, distribution and internal heat load, may be as low as 50°F.



SP-2
Supply air perforated

“SP” Style - Perforated Front Panel Discharge

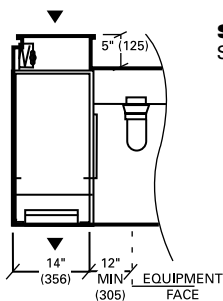
Optional - Sloped front facing panel openings can typically supply 80% or more of required make-up air. Recommended supply air temperature range is 60° to 65°F, but dependent upon volume, distribution and internal heat load, may be as low as 50°F.



SR
Supply air registers

“SR” Style - Register Front Panel Discharge

Registered facing panel opening can typically supply 80% or more of required make-up air. Recommended supply air temperature range is 60° to 65°F, but dependent upon volume, distribution and internal heat load, may be as low as 50°F.



sv
Supply air vertical

“SV” Style - Vertical Down Discharge

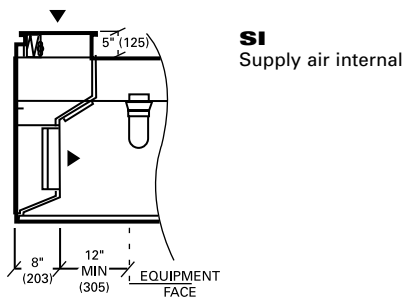
Up to 80% of the exhaust air volume may be supplied through this system. To avoid discomfort to personnel, air must be tempered to 65°F or higher. Collar required to have fusible link fire damper.

APPROVALS: Ventilator shall be U.L. Listed, listed by NSF, and in accordance with all recommendations of NFPA 96. The ventilator must meet all applicable codes.



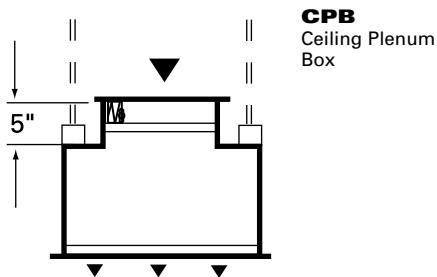


■ **Models SP, SP-2, SR, SV, SI, CPB, SW**



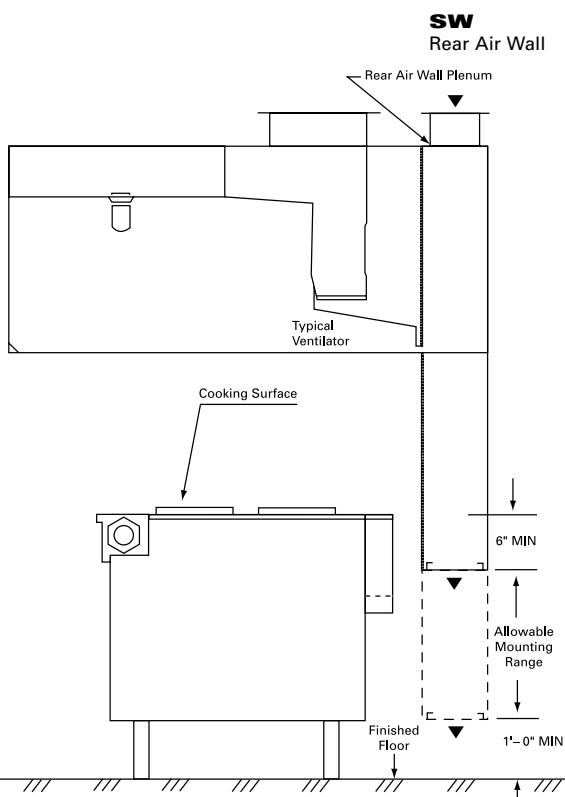
“SI” Style - Horizontal Internal Discharge

Volume of make-up air supplied through this design varies with the type of cooking appliances used. Air may be untempered in most areas, dependent upon climate and cooking appliances. Consult factory for specific air supply volumes and where winter temperatures drop below 10°F. Collar required to have fusible link fire damper.



“CPB” Style - Ceiling Plenum Box

Up to 80% of the exhaust air volume may be supplied through the facing panel openings with this system. To avoid discomfort to personnel, air must be tempered to 65°F or higher. Optional: collar with fusible link fire damper.



“SW” Style - Rear Air Wall Plenum Vertical Down Discharge

Up to 80% of the exhaust air volume may be supplied through this system. The discharge level must be a minimum of 6" below the cooking surface and a minimum of 12" above the finished floor.

COMBINATION SUPPLY AIR

More than one supply air option may be specified on a Carroll ventilator, the following are the possible combinations of supply air: SP/SI, SV/SI, SR/SI, SP/SV, SR/SV, SR/SP, SW/SP, SW/SI, SW/SR, and SW/SV.

AIR SUPPLY GUIDELINES

Appropriately conditioned supply air must be mechanically delivered to the space to replace exhausted air. Generally, 75% to 80% is so delivered, with the remaining 20% to 25% flowing naturally from adjoining areas.

EXHAUST/SUPPLY FAN UNITS

Exhaust fan(s) and supply fan(s) are to be furnished and installed by others to meet the Carroll Ventilator air volumes and static pressure drop for the entire system and must be in compliance with local codes.

- Exhaust fan(s) should be properly sized and include induced draft, squirrel cage design with backward inclined or air-foil type blades.
- Discharge ducts should be vertical and located away from air intakes.
- Supply fan(s) should be equipped with throwaway or cleanable type filters.
- Exhaust and supply fans require a magnetic starter switch with a 120 volt holding coil and should be electrically interlocked for simultaneous operation.

Optional Equipment

Consult Carroll regarding custom services addressing:

- Ventilators
- Exhaust Fans, Supply Fans, & Roof Top Units
- Utility Distribution Systems
- Air Purification Units

